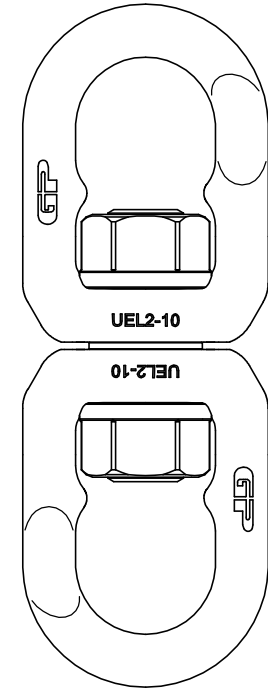
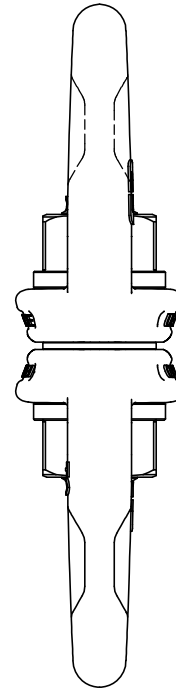
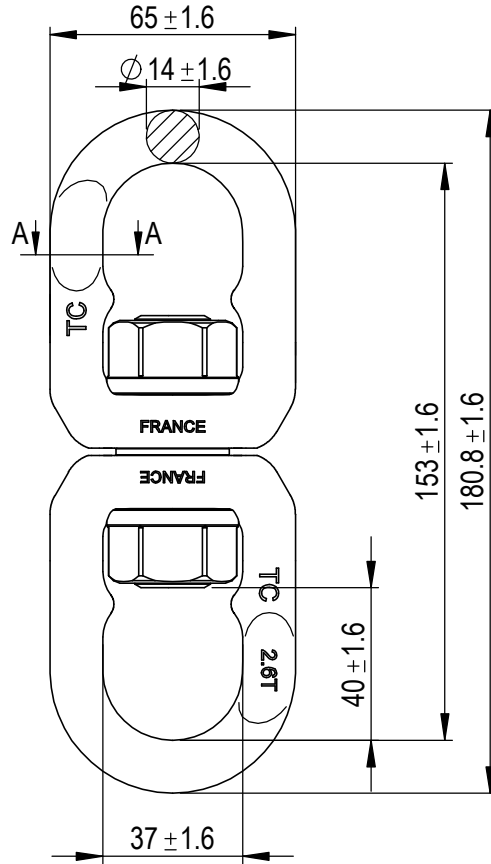
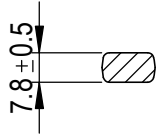


Green Pin® Needle Bearing Swivel EE GR10

Group : UELR

Part : GPUELR1

WLL : 2.6t



A	Add marking	2023-8-25	R.CH
0	First Issue	2020-11-30	R.CH
Rev.	Description	Date	Drawn

Copyright by Van Beest B.V. moreover this document is the property of Van Beest B.V. This document or any part of it may neither be made known, copied or multiplied, nor used for any purpose other than that for which it is specifically furnished, without the prior written consent of Van Beest B.V.

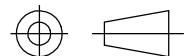
Title Green Pin® Needle Bearing Swivel EE GR10

Remark
UELR
GPUELR1



P.O. Box 57, 3360 AB Sliedrecht (The Netherlands)
Industrieweg 6, 3361 HJ Sliedrecht
Tel. +31(0)184-413300 www.greenpin.com

Format A4
Scale 1:2



Drawing number 7971
Rev. A

We reserve the right to make amendments on specifications in this drawing without prior notification.