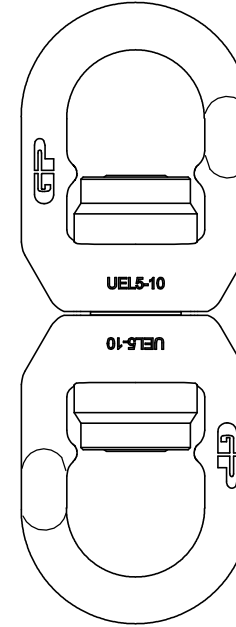
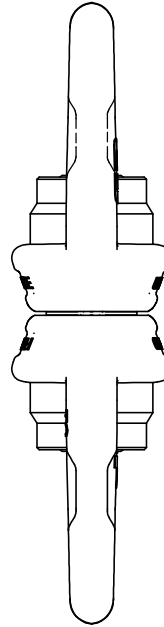
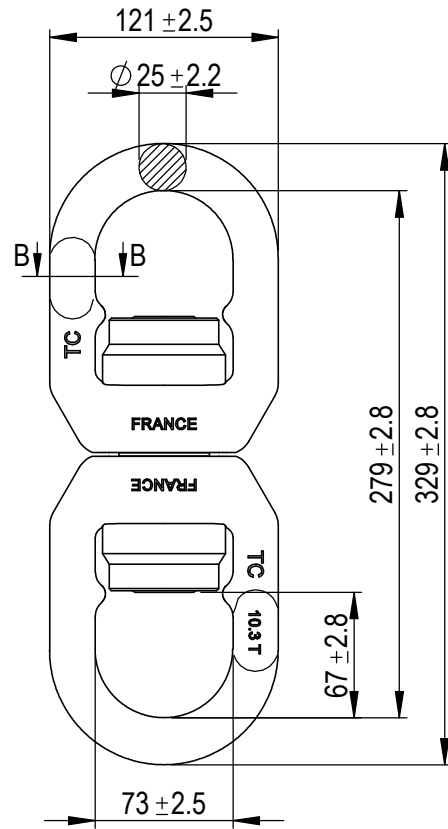
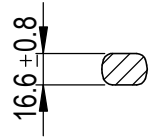


Green Pin® Needle Bearing Swivel EE GR10

Group : UELR
 Part : GPUELR4
 WLL : 10.3t



Rev.	Description	Date	Drawn
A	Add marking	2023-8-25	R.CH
0	First Issue	2020-11-30	R.CH

Copyright by Van Beest B.V. moreover this document is the property of Van Beest B.V. This document or any part of it may neither be made known, copied or multiplied, nor used for any purpose other than that for which it is specifically furnished, without the prior written consent of Van Beest B.V.

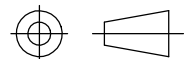
Title Green Pin® Needle Bearing Swivel EE GR10

Remark
 UELR
 GPUELR4



Green Pin®
 P.O. Box 57, 3360 AB Sliedrecht (The Netherlands)
 Industrieweg 6, 3361 HJ Sliedrecht
 Tel. +31(0)184-413300 www.greenpin.com

Format A4
 Scale 1:4



Drawing number 7974
 Rev. A

We reserve the right to make amendments on specifications in this drawing without prior notification.